

Underground rainwater storage tank



NEPTUN 4.3, 6
FLAT 1.5, 3.0, 5.0
Accessories

Underground rainwater storage tank



A proven way to handle rainwater and sewage. CONCRETING IS NOT NECESSARY, which significantly reduces installation costs. Transport and handling are greatly simplified thanks to significant weight savings compared to concrete tanks. Perfect for installation into sand, gravel or clay. All tanks are fully self-supporting.

NEPTUN tanks

- 4300 l tanks have a shaft with a fixed height of 450 mm,
- 6000 l tanks have a 300-600 mm telescopic shaft for easy adjustment to the finished ground level.

Advantages

- produced of high quality polyethylene using a rotational molding method,
- fully self-supporting and certified,
- concrete coating unnecessary,
- tanks have no welds, no risk of cracked seams,
- easy handling thanks to low weight,
- certified,
- tank cover is child-proof and safe for foot traffic (200 kg).

| type | NEPTUN 4.3 | NEPTUN 6 |
|--------------------|------------|----------|
| nominal volume [l] | 4 300 | 6 000 |
| length [mm] | 2 300 | 2 450 |
| width [mm] | 1 700 | 2 040 |
| height [mm] | 1 850 | 2 150 |
| weight [kg] | 160 | 240 |

FLAT tanks

- volumes of 1500 - 3000 - 5000 l

Advantages

- minimum installation depth, resulting in shorted installation times and lower costs, especially for rocky subsoil,
- easy handling thanks to low weight,
- pre-installed seals for tank openings,
- 360-degree shaft rotation for variable and easy installation,
- adjustable shaft length for easy adjustment to ground level,
- system is protected from leakage,
- tank cover is child-proof and safe for foot traffic,
- 1-piece tank, seamless,
- flat design.

| type | FLAT 1,5 | FLAT 3,0 | FLAT 5,0 |
|-------------|----------|----------|----------|
| volume [l] | 1 500 | 3 000 | 5 000 |
| length [mm] | 2 100 | 2 450 | 2 450 |
| width [mm] | 1 320 | 1 600 | 2 100 |
| height [mm] | 750 | 1 070 | 1 340 |
| weight [kg] | 80 | 115 | 240 |



NEPTUN 6



NEPTUN installed with inflow set



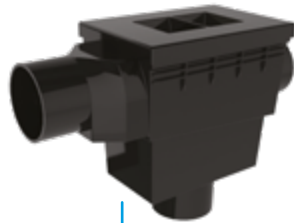
FLAT 3,0

Accessories

Inflow set (for NEPTUN tanks)



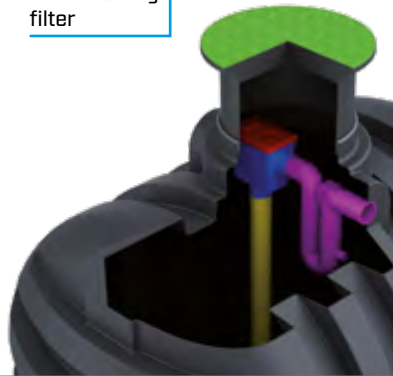
Overflow trap with rodent protection



Self-cleaning filter



Flow reducer to prevent sedimentation turbulence in the tank



Inflow set (optional accessory)

COMFORT set of accessories (for FLAT/NEPTUN tanks)

For garden water use

Submersible pump 1000E

- automatic start-stop
- integrated pressure and flow control, dry run protection
- 900 W motor
- discharge head: 36 m
- max. pressure: 3.6 bar
- flow: 5700 l/h
- max. submersion depth: 12 m
- 2.5 cm (1") connection



External water connection

- for convenient garden water use
- two-way valve for standard hose fittings



Pressure hose

- yellow, with fabric insert
- length: 10 m
- 2.5 cm (1") diameter



Filtration set (for FLAT tanks)

Suspension rod

Filter basket with fine screen for suspension in the shaft



PREMIUM set of accessories (for FLAT/NEPTUN tanks)

For household water use

Drinking water refill module

- emergency water overflow
- float switch-controlled three-way valve (20 m power cord)
- bracket with pump
- quiet centrifugal pump (only 57 dB(A)) with automatic switching
- 660 W motor
- discharge head: 35 m
- max. pressure: 3.5 bar
- flow: 3600 l/h
- suction length/height 15/3 m



Floating suction fitting

- floating suction fitting with fine screen to remove the cleanest water just below the surface
- check valve
- float ball with ring
- 2.5 cm (1") diameter



Wall bushing

- for pipe transition through wall
- DN100



Suction hose

- grey
- reinforcing ribs
- length: 12.5 m
- 2.5 cm (1") diameter

Marking kit

- with warning signs and symbols

Warranty

- warranty - tank: 10 years, accessories: 2 years



ELKOPLAST CZ, s.r.o.

Štefánikova 2664
760 01 Zlín
Czech Republic
e-mail: elkoplast@elkoplast.cz
tel.: +420 575 571 000
fax: +420 575 571 099

